

A Reputation for Problem Solving

Points North is a nationally recognized software firm that's an industry leader in data integration solutions. Our solutions provide integration between HR, Payroll and Time & Labor systems, enabling hundreds of companies across the U.S. to automate their data and work-flow processes.

This automation provides increased accuracy and efficiency, ultimately impacting the overall company performance. With outstanding product delivery combined with world class customer support, Points North is the right direction when it comes to data integration solutions.

We don't simply implement effective solutions to complex data integration challenges. We also develop the solutions, providing added value to out-sourced solutions and in-house applications.

"Points North and ADP have enjoyed a long-standing relationship. Points North is a dependable, efficient, service-oriented partner with excellent products and staff that enhance the ADP offering. We are pleased to partner with such a top-notch organization."

Points North now offers...

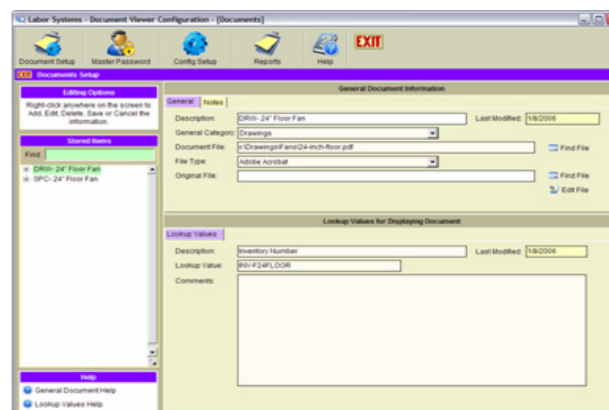
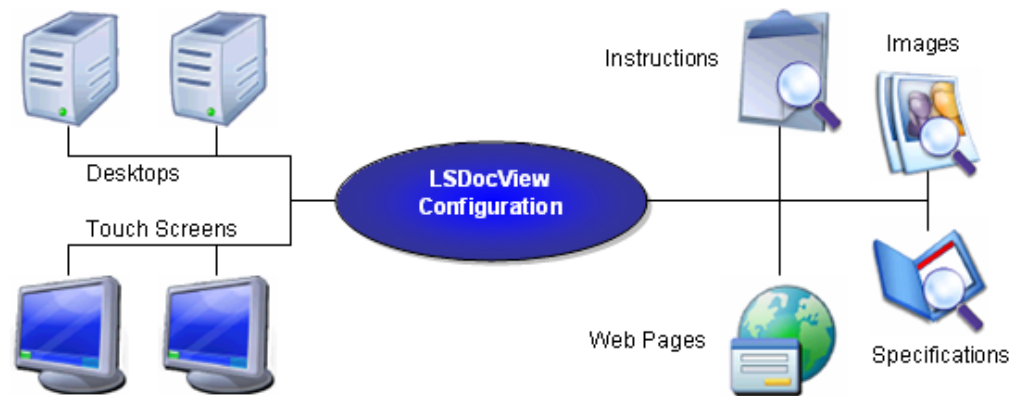
LSDocView

Touch Screen/Desktop Document Viewer

LSDocView was developed to eliminate paper, manually compiled binders of drawings and specifications, and forgotten locations of document files. It can be used on a touch screen computer or PC to retrieve documents stored in other locations without the user having to know the name of the document, location or type of document. The user enters or scans a Lookup ID at the touch screen or PC and LSDocView locates all documents that have a relation to the Lookup ID. You can associate as many Lookup IDs as you want for each document. One lookup ID can also be assigned to more than one document.

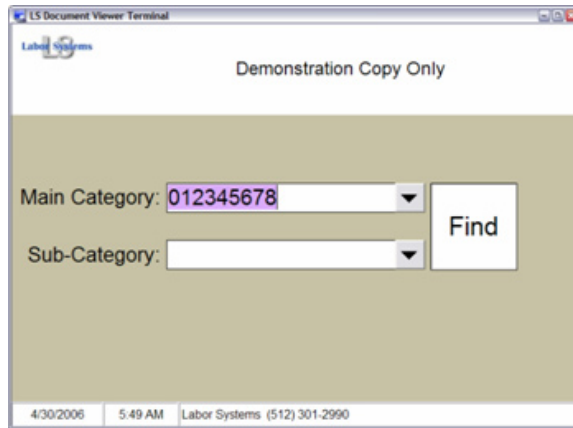
The Suite includes the Configuration program (which determines available documents and Lookup IDs), a Terminal program for accessing the documents via a touch screen computer terminal and a Desktop program for accessing documents from a desktop PC on the network.

Documents are displayed using document vendor supplied readers such as Adobe Acrobat, Word and others on the touch screens or PCs.



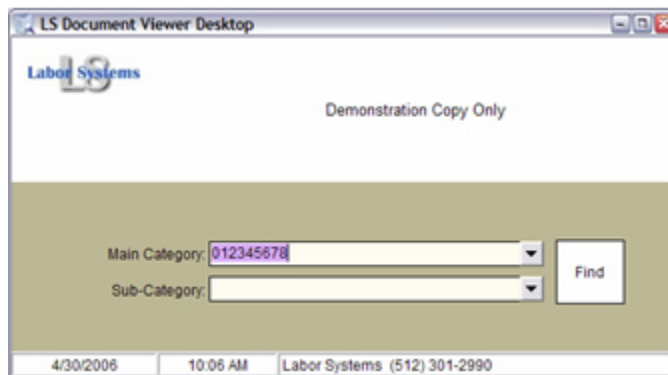
Configuration Program

This is the configuration component of the Suite. It is used to define document accessibility, document file locations, Lookup IDs associated with one or more documents, document file categories and file types. It's a easy-to-use program which is used to maintain the document catalog. Both the Terminal and Desktop applications retrieve documents that are set up in this catalog.



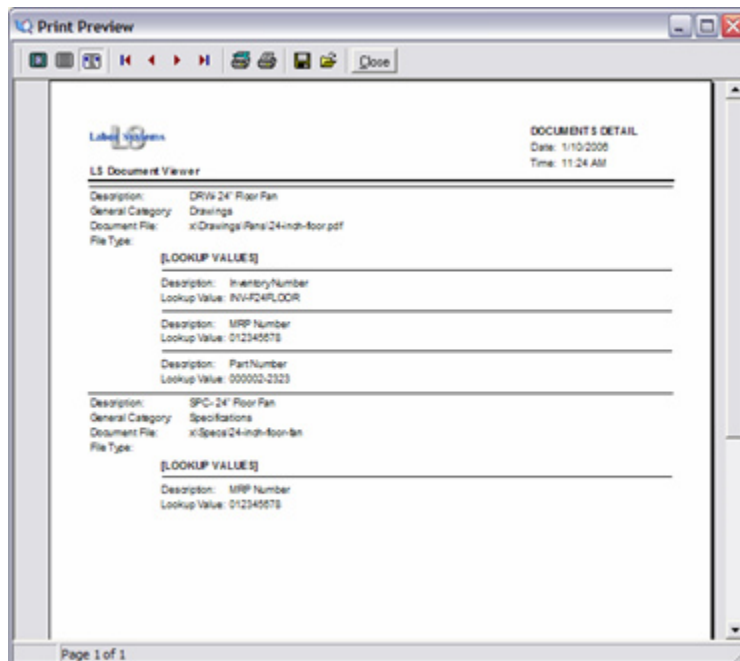
Touch Screen Terminal

The Terminal application runs on a touch screen and is used to retrieve and display documents directly on the touch screen. A barcode gun can be attached to the touch screen to scan a Part Number, Job Number or any other identifying ID and retrieve all the documents associated with that ID.



Desktop

The desktop application is designed to run on a desktop PC. This is typically used by engineers, supervisors, healthcare workers, professionals or anyone needing access to documents from their PC.



Reports

LSDocView provides list and detail reports of information stored in the system. Reports are viewed on screen and can be printed as well.